

# Blood/Tissue/Cell Genomic DNA Extraction Kit (Magnetic bead method)

## Overview

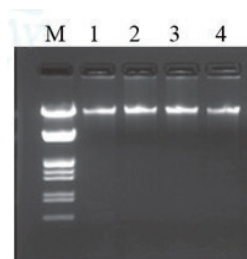
Cat.No. HG-NA100

This kit is designed for the simple and efficient extraction of genome. This kit can be applied to extract a small quantity of samples manually and perform in a high-throughput scale automatically.

Genomic DNA Extracted by this kit can be used to detect host cell DNA in some experiments.

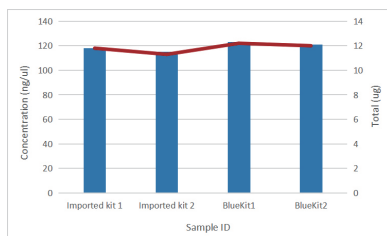
## Applications

Shows higher yield and higher purity compared to competing products.



Electrophoresis in 1% agarose gels  
 Strip No.1&2: Blood/Tissue/Cell Genomic DNA Extraction Kit (Magnetic bead method)  
 Strip No.3&4: Imported Kit  
 Results show that genomic fragments extracted using the Bluekit® kit are as complete as those using imported kits.

Extract genomic DNA from two blood samples respectively with the imported kit and the Bluekit® kit, and then detect the concentration with Nanodrop. Results show that the the Bluekit® kit has 5-10% yield more than the imported kit.



	ng/μL	Total(μg)	260/280	260/230
Sample 1	108.72	10.87	1.80	2.13
	112.72	11.27	1.79	2.09
Sample 2	106.56	10.66	1.80	2.10
	106.95	10.70	1.79	2.07