

BCA Rapid Protein Quantitative Detection Kit

Overview

Cat.No. HG-BC001

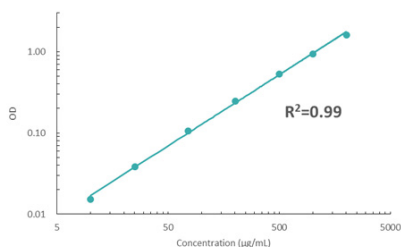
BCA Rapid Protein Quantitative Detection Kit in the BlueKit® series has the characteristics of high sensitivity, stable results, and simple operation. The principle of this kit is that Cu^{2+} is reduced by protein to Cu^+ under alkaline conditions, and then Cu^+ and BCA interact to form a purple reaction complex, showing a strong absorbance at 562 nm, and presenting a good linear relationship with protein concentration.

Specification

Assay range: 10~2000 $\mu\text{g}/\text{mL}$

Limit of detection: 0.39 $\mu\text{g}/\text{mL}$

Standard curve



Datasheet

Concentration of standard (ng/mL)	OD value1	OD value2	Mean value
0.00	0.1039	0.1039	0.1039
10	0.1196	0.1190	0.1193
25	0.1424	0.1430	0.1427
75	0.2098	0.2094	0.2096
200	0.3519	0.3540	0.3530
500	0.6408	0.6380	0.6394
1000	1.0423	1.0500	1.0462
2000	1.7229	1.7210	1.7220